



CPS



NEW HIGH SPEED STATION IN VILLENA (ALICANTE)

CONTRACT INFORMATION

ADMINISTRATIVE INFORMATION

CONTRACT TYPE:

Technical Assistance Service for control of the Installation work.

CONTRACT NAME:

Assistance service for the control of the work construction of the Project for the New High Speed Station of Villena on the New High-speed Railway Access of Levante.

LOCATION: Villena (Alicante)

CONSULTING FIRM:

CPS Ingenieros, Obra Civil y Medio Ambiente, S.L.

BUDGET: .81.537,66 € IVA included

WORK BUDGET: .15.535.671,44 € IVA included

CLIENT: Administrador de Infraestructuras Ferroviarias (Adif)

DATE (BEGINNING-END): October 2012-February 2014.

DATOS TÉCNICOS

Station Construction:

Construction of a building with two floors and a Surface area of 3,120.19 m².

Platforms:

Execution of 2 platforms 400 meters in length, with a constructed Surface area of 6,400 m².

Estate:

Estate with a constructed Surface of 24,667.00 m².

Parking:

Execution of a parking lot with 111 spots and a constructed surface area of 3,196.34 m².

Wastewater Treatment Plant:

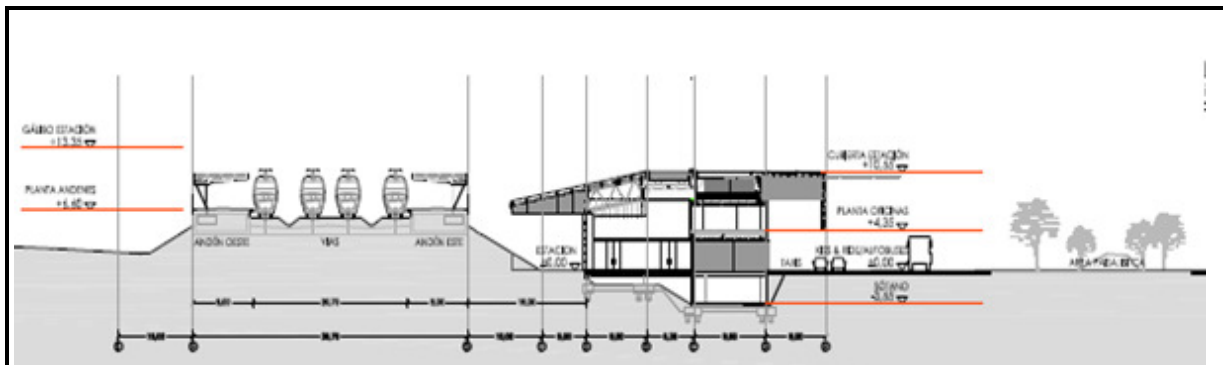
Execution of industrial wastewater treatment plant with a natural landfill system of treated effluent.

WORK OBJECTIVE

The objective of the contract is to provide consulting and assistance service for the execution of the work by providing technical support to the Director of the work for control and monitoring. The project consists of construction of the New High Speed Station in Villena, access roads to the station and external urbanization, passenger parking, platform zones and access to the platform from the main building.

DEVELOPED TASKS

- Geometric Control
- Economic Control
- Material Quality Control
- Initial Project Report
- Monthly Report
- Modified Report
- Project Liquidation of the work
- Price Revision



Cross section of the station.



CPS



WORK DESCRIPTION

The Project proposes the construction of the New High Speed Station of Villena, that consists of:

- **Execution of a two-floored building**, lower floor designed for technical rooms, supervisor offices, manager component and meeting room, ticket sales room, lobby and commercial premises with an area of 3,120.19 m². The second floor is designated for offices and local commercial premises.
- **Execution of 2 platforms** of 400 meters long and 8 meters wide, as well as 2 metallic canopies each 200 meters long.
- **Development** consisting of road connections and circulation of private and public vehicles to access the station ("park & ride") and access to the car parking area. In addition, it includes pedestrian zones associated with the departures and arrivals of the travelers and the waiting areas outside the station.
- **Execution of a parking area** for 111 covered spots using metal canopies and installments for the parking management facilities, Access control and lighting equipped with intelligence management circuits ignition.



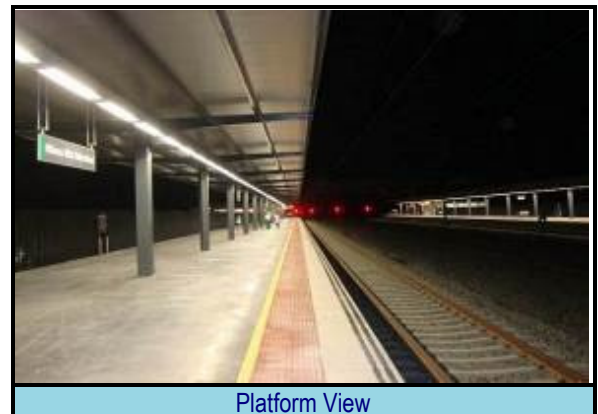
3D View



Final Work View



Work in progress of the roof



Platform View